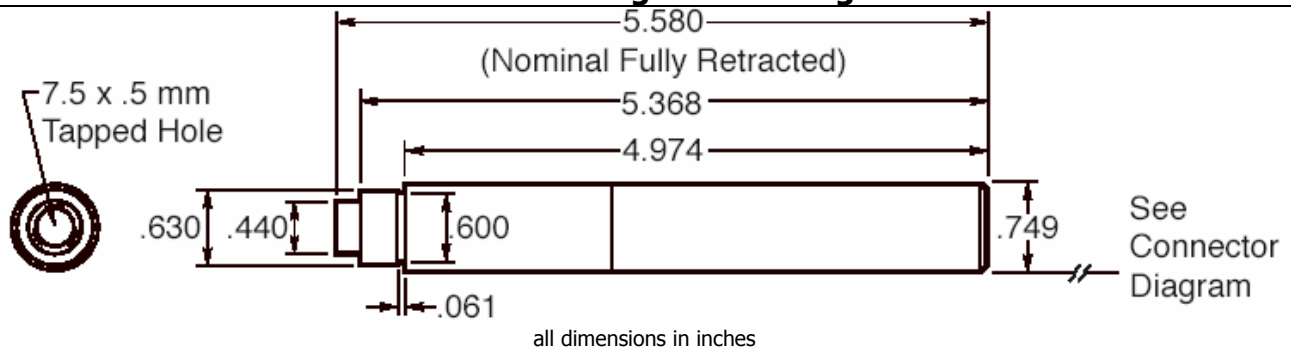


# MicroPositioner Data Sheet

## Model # R225

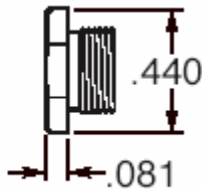
Travel Range	25mm	Maximum Force (push/pull)	9 lb.
Design Resolution	0.059 $\mu$ m	Maximum Lateral Force	1 lb.
Minimum Increment	0.1 $\mu$ m	Encoder Resolution	60 counts/ revolution
Repeatability (unidirectional)	0.1 $\mu$ m	Power Consumption (nominal)	2 watts over voltage range or +5V to +15V
Backlash	<0.5 $\mu$ m		
Maximum Velocity	0.7mm / second	Required Encoder Voltage	12V min to 15V max

**The R225 MicroPositioner can be mounted by clamping around  
The end collar without danger of binding the lead screw**

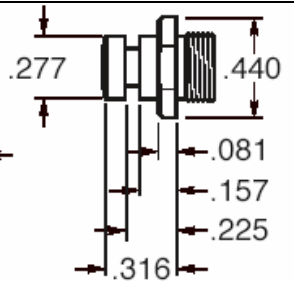


### MicroPositioner Tip Options

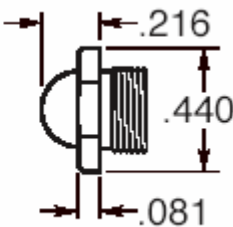
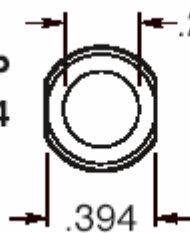
**FLAT TIP  
RT2**



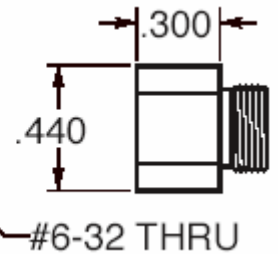
**SPHERICAL  
TIP RT3**



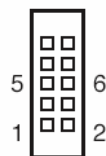
**BALL TIP  
RT4**



**#6-32 TIP  
TAPPED ID  
RT5**



**Micropositioner #R225  
Connector Diagram**



PIN OUTS

MOTOR +	1
+VDC (MAX 15V)	2
CHAN A OUT	3
CHAN B OUT	4
VDC RETURN	5
MOTOR -	6



**Phresh Photonics**

5737 Kanan Road: Suite #217

Agoura, Ca 91301

tel: 818-292-2479 fax 818-707-3616

[www.phreshphotonics.com](http://www.phreshphotonics.com) [info@phreshphotonics.com](mailto:info@phreshphotonics.com)